



Dear Friends and Supporters,

Looking back on my first year as the [President & Chief Executive Officer for the National Service Office for Nurse-Family Partnership and Child First \(NSO\)](#), I am overwhelmed with gratitude. This year also marked the 20th anniversary of the NSO, a period filled with both change and exciting opportunity to expand the impact of our programs. I'd like to highlight a few achievements:

- Developed a new Vision, Mission, and Values as well as a new brand identity and strategic vision for the NSO, all focused on how we take a stronger stand in achieving equitable outcomes and supporting families more holistically through our programs. A 2025 launch is planned – more to follow in the coming months.
- Successfully concluded an eight-year grant to the NSO to expand the reach of Nurse Family Partnership. During this period, families served within the NFP target population grew by 33%, while maintaining consistent program outcomes.
- Launched several pilots related to increasing access and equitable outcomes for families, including expanding partnerships with tribal communities, launching cultural consciousness pathway training, piloting programming within NFP and Child First to serve a wider breadth of families, and identifying opportunities to bridge cultural and language divides.
- Uplifted the work of our affiliates and explored ways to scale solutions that are working. For example, Child First affiliate site, Coastal Horizons in North Carolina, was selected as a winner of The Substance Abuse and Mental Health Services Administration's (SAMHSA) Behavioral Health Equity Challenge. This award is in recognition of their exemplary presentation on approaches to effective outreach and engagement with racial and ethnic underserved individuals to foster behavioral health equity throughout the country.

Our mission is made possible by the support and partnerships we have with donors, volunteers, local partners and affiliates, bipartisan policymakers, and nurses and clinicians who provide essential services and support systems to families.

Together, we aim to ensure that more families, particularly those facing the greatest challenges, benefit from improved access, quality and overall experience of the essential programs and resources we provide.

I'm proud to share this Year in Review, highlighting the scale and impact of our programs and our 2023 financials.

In gratitude,

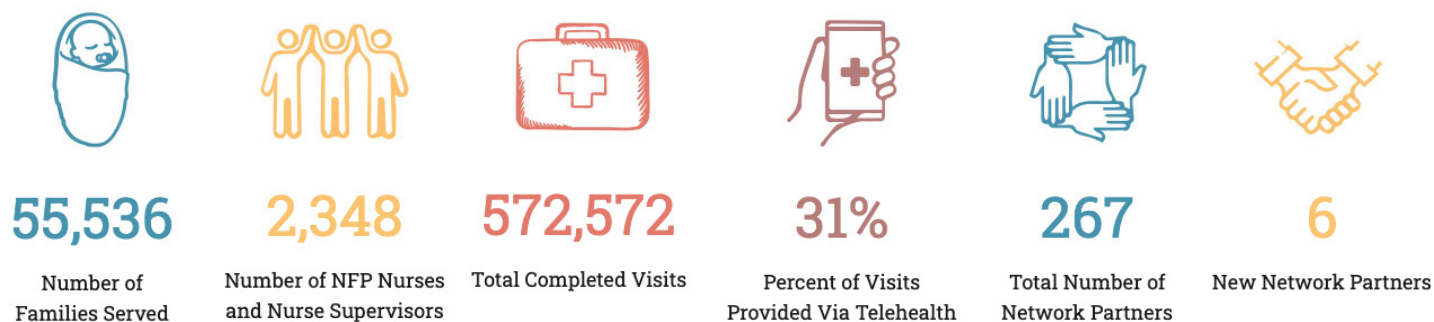


Charlotte Min-Harris  
President and Chief Executive Officer

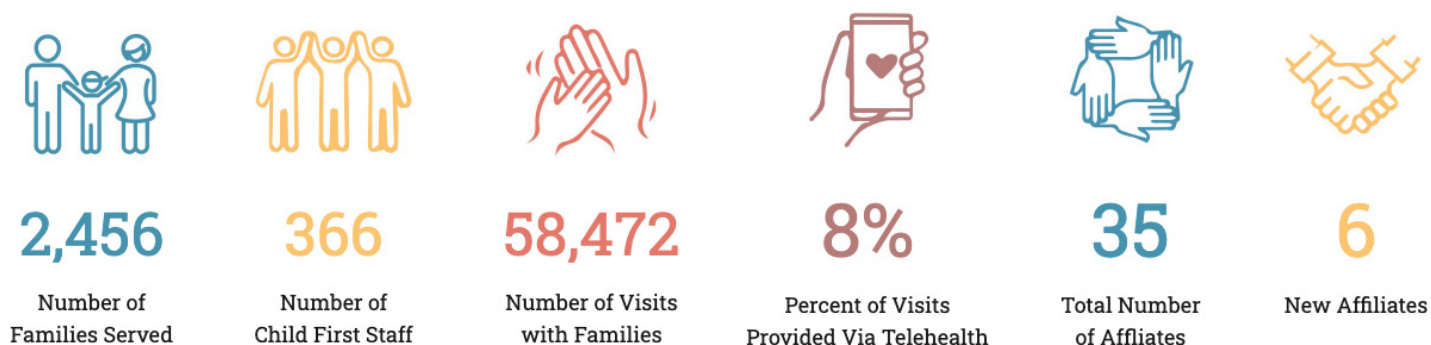
## BY THE NUMBERS: THE SCOPE AND SCALE OF OUR PROGRAMS

The National Service Office for Nurse-Family Partnership and Child First, serves as the umbrella organization for two of the nation's leading evidence-based home visiting programs. With health equity at the core of our work, our reach highlights how we are growing and sustaining our programs to ensure that we're an integral part of the continuum of care to families that strengthen family stability, connection and their long-term ability to thrive. Our work is guided by a family-focused and strength-based approach that lends itself to empowering families on their own unique journeys. The following is a snapshot of the scope and scale of Nurse-Family Partnership and Child First in delivering support and services to the families who need it most.

### NURSE-FAMILY PARTNERSHIP:



### CHILD FIRST:

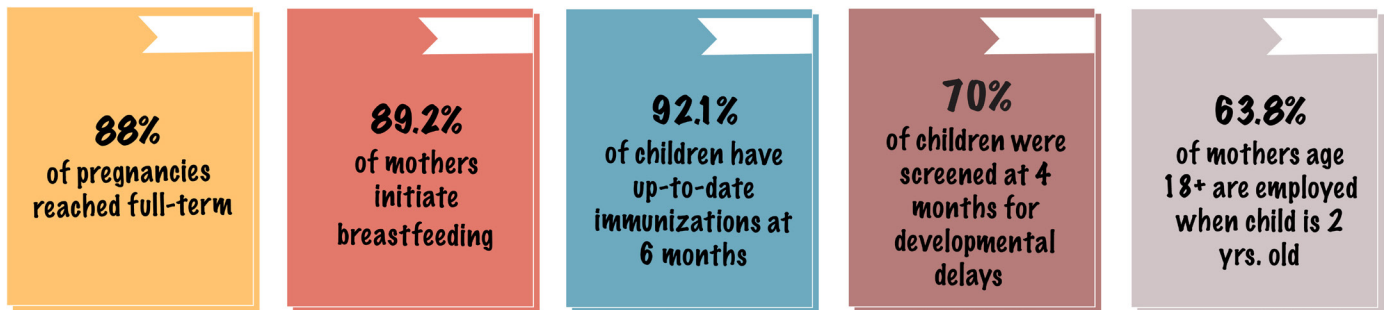


# OUTCOMES

Understanding the impact of Nurse-Family Partnership and Child First and how we can continuously improve our impact is a core value of our organization. Both programs collect detailed data to track outcomes, measure impact and better understand the experience of families.

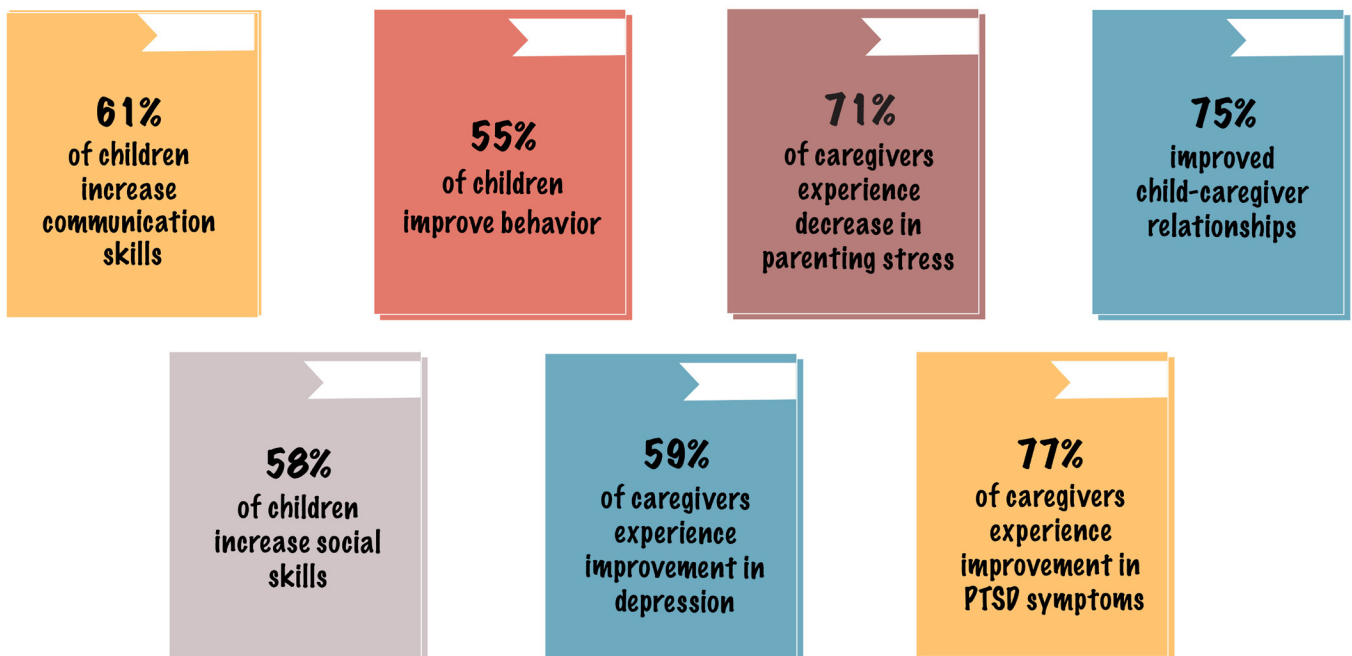
## NURSE-FAMILY PARTNERSHIP:

In 2023, Nurse-Family Partnership saw client outcomes meet or exceed the program targets in the following areas:



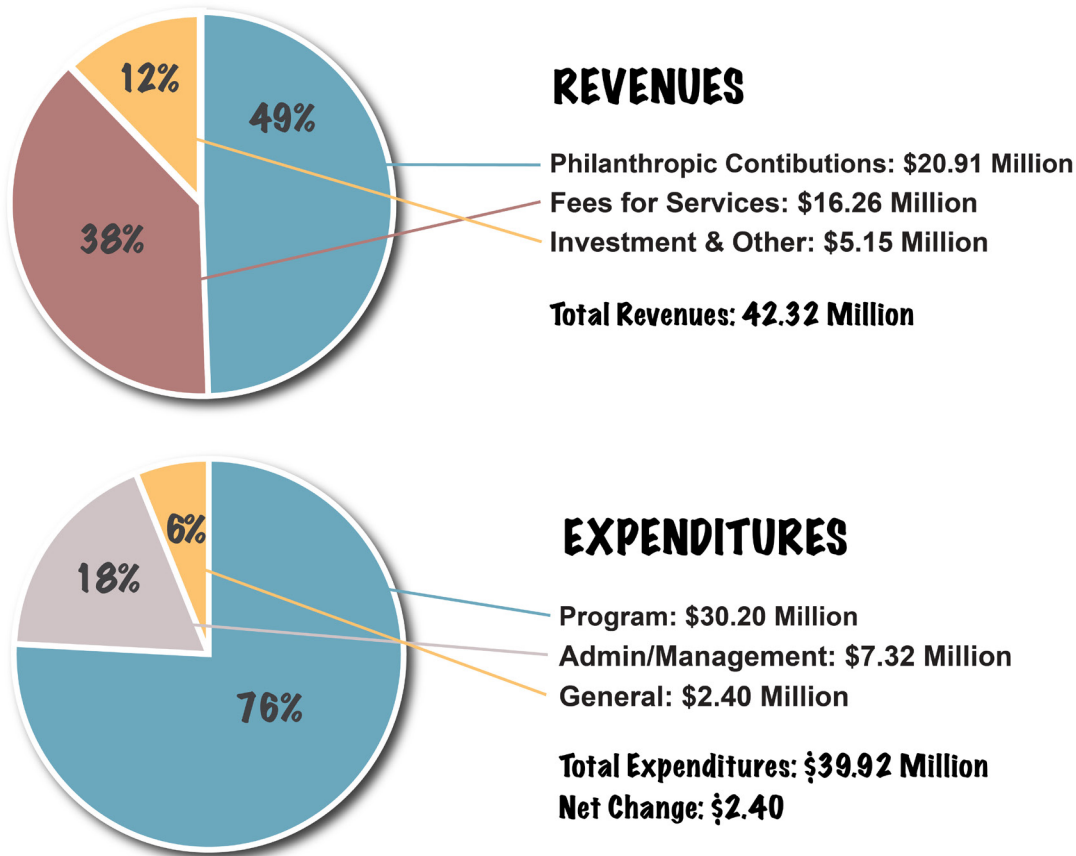
## CHILD FIRST:

In 2023, Child First families saw high levels of positive effects when comparing families at enrollment to families at discharge in these areas:



# FINANCIALS

In order to have the biggest impact, the National Service Office for Nurse-Family Partnership and Child First leverages resources — from philanthropic contributions to investment income and earned income — to support communities and families across the country. Every dollar raised is needed and valued as we use these resources to fund the National Service Office's mission and invest in our network to ensure that life-changing support is available to those who need it. We want to express our deep gratitude to our donors and supporters who fund our charitable mission.



The National Service Office recognizes philanthropic support for financial purposes in the year in which a commitment is made, regardless of when funds are received or when expenditures are incurred. Net assets, therefore, may increase in a year when commitments are recognized and decrease in later years when associated funds are spent. Adequate net assets also ensure the organization has sufficient operating reserves to weather any future financial unpredictability.

## FOR MORE INFORMATION PLEASE CONTACT

[Giving@NurseFamilyPartnership.org](mailto:Giving@NurseFamilyPartnership.org)